



Digi4Park®

UPDATING MANUAL

V 1.0

21/04/2014

PUBLIC END USER DOCUMENT FOR D4P UPDATING PROCESS



Contents

INTRODUCTION	3
UPDATE APP INSTALLATION & DOWNLOAD OF FIRMWARE.....	4
Microsoft .NET Framework Download.....	4
Digi4Park® Update Application Download.....	4
Download of Digi4Park® Firmware	5
Connection to Computer	6
Digi4Park® Connection	6
Updating Process.....	7

INTRODUCTION

This document is designed for the Dig4Park® end users that wants to update the Car or Functions DataBase of the unit control installed in the car. Update a Dig4Park® unit control is a process that could be able to modify any function of the actual software, so it is important that you be 100% sure that the software update is appropriate for your car.

This document describes how to connect the Unit Control to a Computer, How to install the software into the Computer and how update

We have divided the document in 4 important parts:

- Digi4Park® Update App Installation & Downloading of Digi4Park® Firmware
- Digi4Park® Connection to Computer
- Updating Process

You will have to take in mind 3 important points before start the installation:

- You will need and USB/A to Mini USB/B wire (normal one for External Hard Disk)
- You will need to have the Digi4Park® unit control COMPLETELY DISCONNECTED OF THE CAR
- You will need a computer with Windows (XP or newest) with .NET 4.0 Framework installed

Software and update paths can be downloaded from www.digi4park.com


UPDATE APP INSTALLATION & DOWNLOAD OF FIRMWARE

To make the updating process you will need a computer with Windows XP (OS) or newest and free USB ports.

Microsoft .NET Framework Download

The first point will be to start the download of the .NET Framework 4.0 if you don't have it installed. In order to download it, you can make click into the next link:

<http://www.digi4park.com/tech-support/software-updates/>

MICROSOFT .NET FRAMEWORK 	The Microsoft .NET Framework 4 web installer package downloads and installs the .NET Framework components required to run on the target machine architecture and OS.	DATE: 2/21/2011 V.NUMBER: 4
--	--	--------------------------------

After making the installation, you will have to restart the computer. If you have installed before, you can pass this step.

Digi4Park® Update Application Download

The update application is the program that you need to make any update of the Digi4Park® software. This program is developed by Digi4Park® and you will have to download from our website. One it has been installed and each time that the application restart, it will check if there is a most modern version of it. So it is recommended that you use a computer that was connected to Internet.

If you don't have it installed. In order to download it, you can make click into the next link:

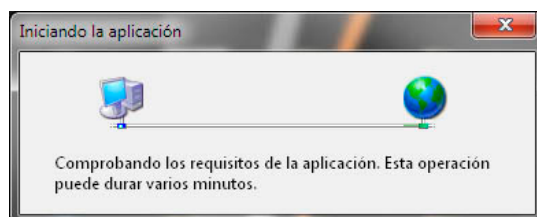
<http://www.digi4park.com/tech-support/software-updates/>

...and after that you can make click on the next link:

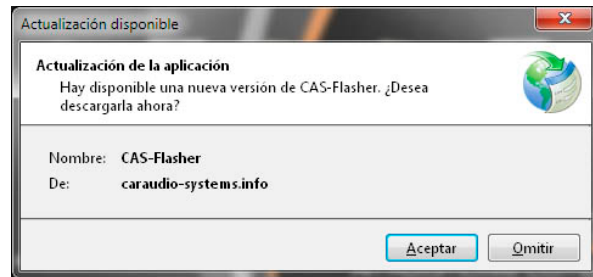
DIGI4PARK® UPDATE APPLICATION Windows XP, 7, NT	Windows Software Application to update the Digi4Park® firmware <i>"Be note that .NET FRAMEWORK 4.0 will be needed"</i>	DATE: 03/01/2014 V.NUMBER: 1.2.18.3
---	---	--

As we have told to you, after the installation of the application you will be able to make click in the icon CAS-Flasher or D4P-Flasher (Depending of the software version that you use):

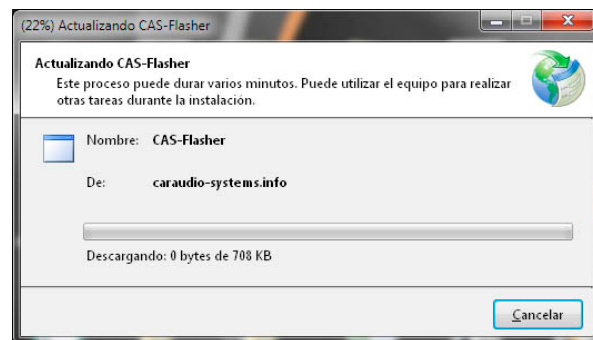
The application will check if there is any newest version of the application (This picture will change depending of the Language of your computer)



If there is a new version of the update app, Windows will advise to you in order to download the new application. Please click into [OK] or [ACCEPT] button to start the download. You will need and internet connection.



Once the you make click into [ACCEPT], your computer will start to download the last version of the application to your computer.



If you have and old version it will make the complete uninstall and unattended reinstall process

When the download process will be finished the application for making the update will start automatically, and you will see a Windows Application similar to the picture below.



Download of Digi4Park® Firmware

The last stable software version of Digi4Park® is normally published in the official webpage. So you can download directly from there. If you don't have it downloaded you can make click into the next link:

<http://www.digi4park.com/tech-support/software-updates/>

...and after that you can make click on the next link:

DIGI4PARK® FIRMWARE

Windows XP, 7, NT

Last version firmware version with the most current features and compatible car Digi4park® database.

"Be note that DIGI4PARK UPDATE APPLICATION will be needed"

DATE: 03/01/2014
V.NUMBER: 1.0.0

Please save the update firmware file that you have downloaded in your hard disk in order to be able to select later for the update application.

Connection to Computer

Once you have installed the application into your computer, you can start the connection and later the installation. Take in mind that you will need:

- Digi4Park® Unit Control - COMPLETELY DISCONNECTED OF THE CAR
- One USB/A to Mini USB/B Wire
- Application Installed



Digi4Park® Connection

Connect the USB wire between the computer and the Digi4Park® unit control as you can see in the picture below:



Then you will see that the 3 LED lights of Digi4Park® switch to ON



Updating Process

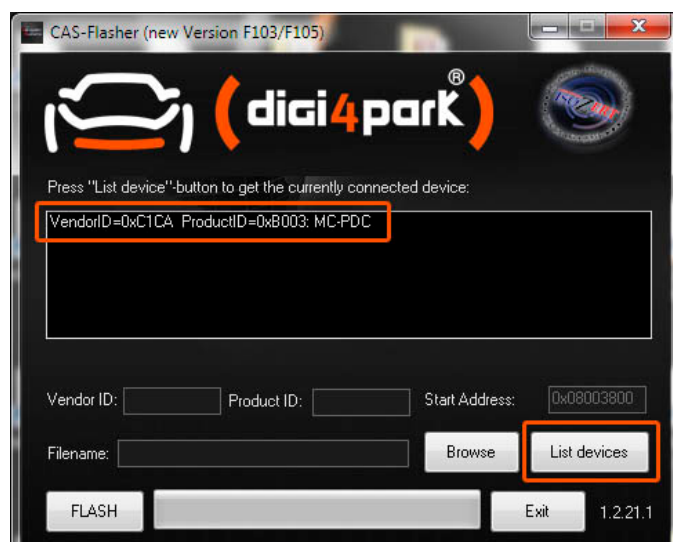
The final step to make the updating of the ECU is to select the appropriate firmware downloaded from the web and start the process into the application. So keep finally this steps:

STEP 1

Check that Digi4park® App recognize the Unit control connected to it. If you do not see the text:

VendorID=....

..then you will have to refresh the application making click into the button [List devices]



STEP 2

Open the file with the update path to make the firmware update making click in the button [Browse].

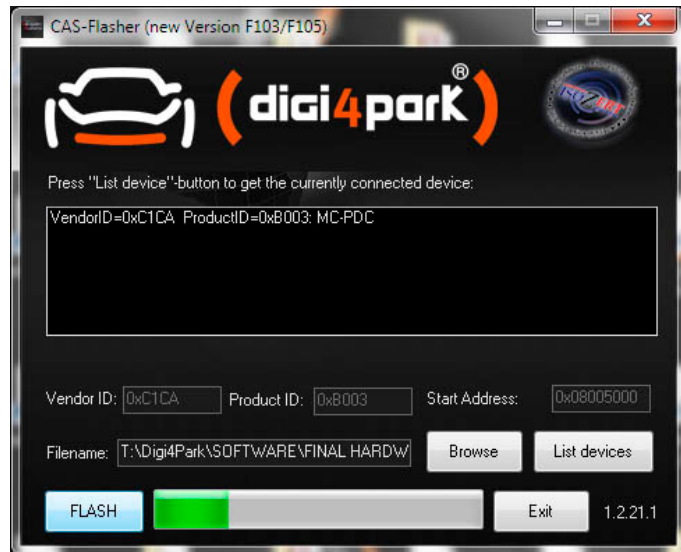
Use the Windows Browser to select the appropriate file that you have downloaded previously.



STEP 3

Press the button [FLASH] to start the updating process.

Please wait until the progress grey barr is completed to green colour



STEP 4

When the process is finished, you will see the progress barr in green colour and also a green marked area to show to you that everything finished correctly.

Now you can disconnect the Digi4Park® Unit control.

PLEASE BE NOTED THAN THE LED LIGHTS HAVE SWITCHED TO OFF

